



Phone: (800) 344 - 9745  
Fax: (800) 344 - 8007  
[www.motorsportproducts.com](http://www.motorsportproducts.com)  
[info@motorsportproducts.com](mailto:info@motorsportproducts.com)

## Nerf Bar Installation Instructions for Yamaha Banshee

### HARDWARE KIT (#81-35000-HW)

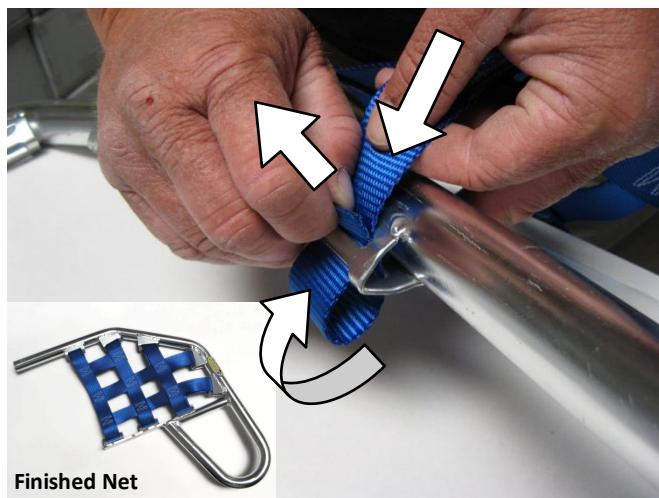
- |                      |                             |
|----------------------|-----------------------------|
| (2) #81-10CLAMP      | (2) 8mm x 16mm FLANGE BOLTS |
| (4) 6mm FLAT WASHERS | (2) 8mm x 35mm FLANGE BOLTS |
| (4) 6mm NYLOCK NUTS  | (4) 6mm x 25mm FLANGE BOLTS |
| (1) NERF NETS (PAIR) |                             |

Check all hardware to hardware list  
**BEFORE** you being installation

Use Loctite on all bolts when installing

### STEP 1 – LACE NETS

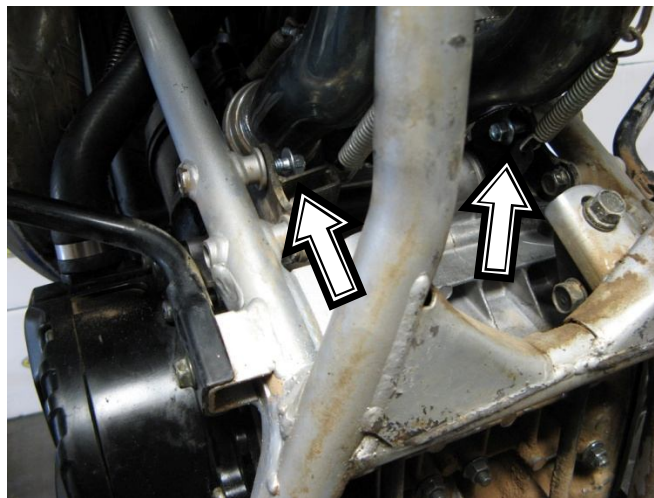
Lace Webbing on to both Nerf Bars into each corresponding buckle. Feed the webbing end through the Top Slot, out the Bottom Slot, then back into the Middle Slot and back out the Top Slot.



Finished Net

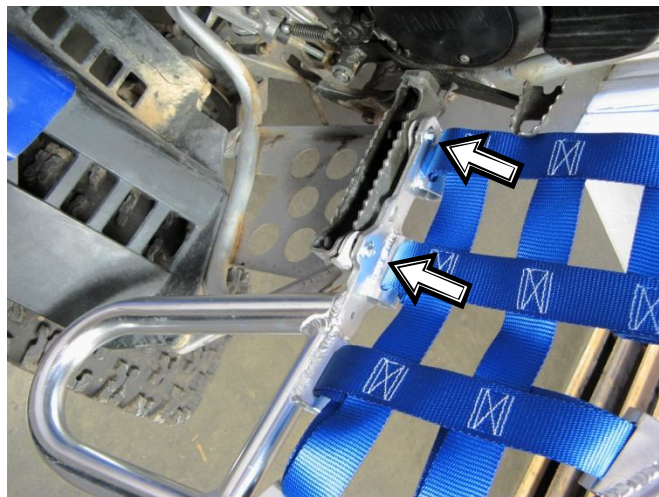
### STEP 2 – REPLACE BOLTS

Remove the Upper Motor Mount bolts on both sides of the Triangle Motor Mounts. Replace these (2) Bolts with the 8mm x 16mm Bolts Supplied in the HW Kit. Tighten bolts.



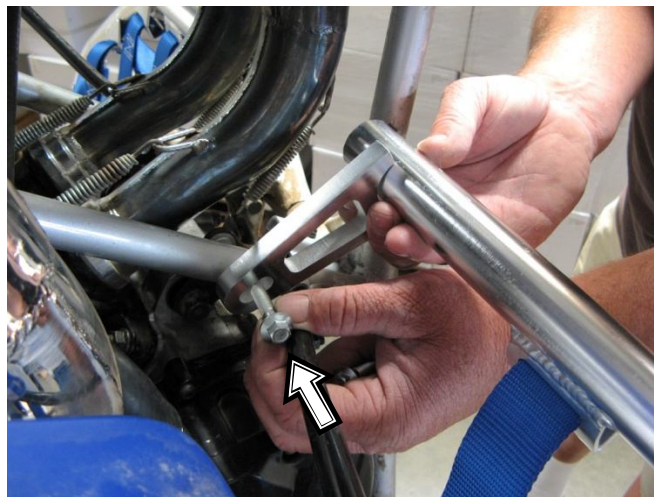
### STEP 3 – BOLT TO FOOT PEGS

Bolt Nerf Bar Flat Plates to front of foot pegs on each side as shown using the (4) 6mm x 25mm bolts, (4) 6mm Washers & (4) 6mm Nylock Nuts (supplied in the HW kit). **DO NOT TIGHTEN YET.**



### STEP 4 – ATTACH BRACKETS

Install Billet Brackets to the outside of the frame tube, using the 8mm x 35mm bolts supplied in the HW kit. The bolts will share the same holes as in **Step 2**, but from the opposite side of the frame tube. **DO NOT TIGHTEN YET.**



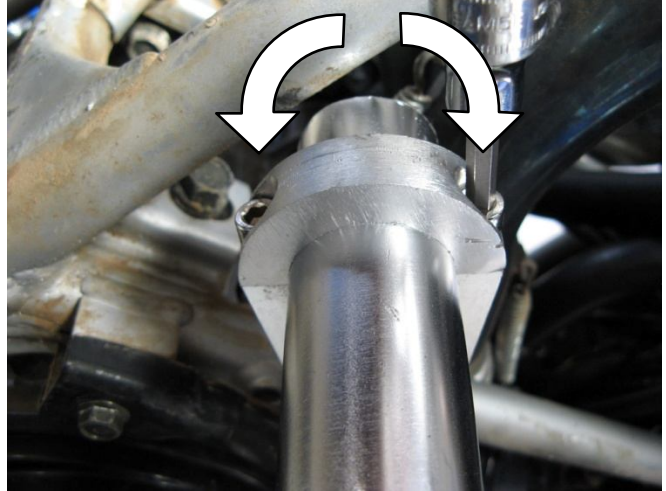


Phone: (800) 344 - 9745  
Fax: (800) 344 - 8007  
[www.motorsportproducts.com](http://www.motorsportproducts.com)  
[info@motorsportproducts.com](mailto:info@motorsportproducts.com)



## STEP 5 - ATTACH "C" CLAMPS

Install the bottom "C" Clamp and tighten evenly. Switch back and forth every quarter-turn between the bolts when tightening until the "C" Clamp is secure.



## STEP 6 - TIGHTEN BOLTS

Tighten all (4) Mounting Bolts on Foot Pegs....



...Then the Bolts on Each Billet Clamp

